

The Listing Process

- 1 Identification** of properties of cultural heritage significance. Submissions from the public are welcome.
- 2 Recording** of the building through photographs and a survey of the architectural characteristics
- 3 Historical research** on past ownership, architect, and significance to the development of North Glengarry
- 4 Presentation** to Council of a statement of significance of each property for approval by formal resolution
- 5 Publication** of the listed building on the North Glengarry Heritage Register

Glengarry Pioneer Museum



An ornate Brick Residence

**For more information,
please contact:**

Township of North Glengarry

90 Main Street South
Alexandria, Ontario K0C 1A0

Economic Development Officer

613-363-0819

ecdev@northglengarry.ca

www.northglengarry.ca

Contact

NORTH GLENGARRY

Ontario's Celtic Heartland

**How to be included on the
Municipal Heritage Register**



Moulin Priest's Mill

Why list my property in the Heritage Register*?

- While not required, the Register is a **valuable resource** that enhances the community's knowledge of its cultural heritage assets
- It is an **important planning tool** that is easily accessible and consulted by municipal decision-makers, property owners, land-use planners, the tourism industry, educators, and the public at large
- The Register provides a 60-day **interim protection** for properties listed as being of significant cultural heritage



Stone Residence

* **The Heritage Register** is a document mandated under the Ontario Heritage Act that contains **a list of cultural heritage properties** "designated" by by-law under the Act, as well as "**listed**" properties having been determined to be of significant heritage value.

Effective January 1, 2018, properties listed on the Municipal Heritage Register may qualify for Phase III of the North Glengarry Community Improvement Plan

Your property may be considered for listing if it:

Criteria for Listing

Was constructed **before the 1940s**

Contains **visually apparent features** such as:

- Historic materials like brick, Boyd block, stone, log, or period cladding
- Architectural features
- Other period-identifying features like windows, doors, cornices, balconies, transoms, porches, roof lines, etc.

Has a documented history showing its

importance to the community by:

- Being in direct association with a theme, event, belief, person, activity, organization, or institution

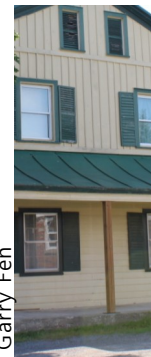
A variety of architectural and historical factors can contribute to a property's cultural heritage



Breadalbane Baptist Church



Log House



Garry Fen

Applying for Listing

What information will I need to include?

- Property name
- Civic address
- Property roll number
- Name(s) of architect/builder (if known)
- Date of construction (if known)
- A brief historical summary
- List of character-defining features
- List of modifications
- Indication of geographic location (e.g. maps, aerial photography)
- Any historic photographs
- Current photographs
- List of sources used (e.g. books, archives, newspaper articles, anecdotes)



A Victorian-era Residence

You will need this information to complete the **Request for Listing** form, available online and at the Township office.

All listing applications will be reviewed by the North Glengarry Arts, Culture and Heritage Advisory Committee